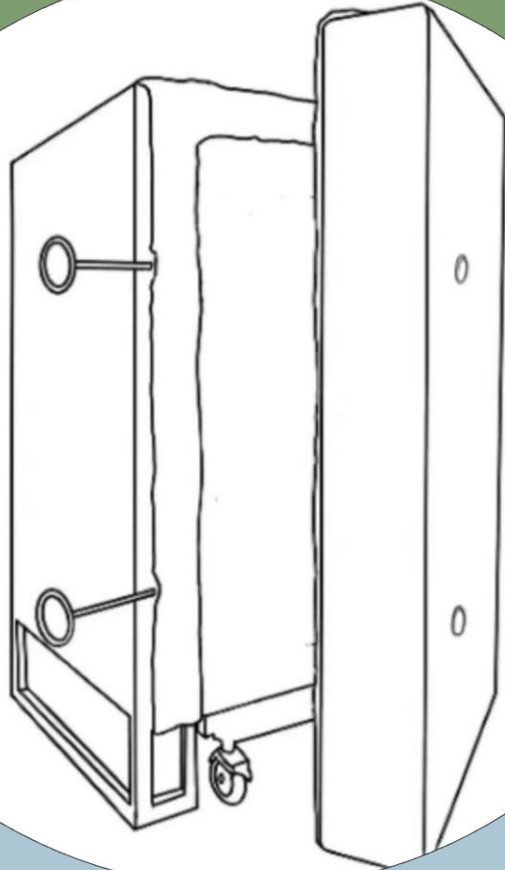


Matt Watterson X  
Nanac Studio



# 窑房国际 驻场空间

**THE KILN ROOM**  
International Ceramics  
Residency

# THE KILN ROOM

*'Created by artists for artists. 由艺术家为艺术家而打造。'*



The Kiln Room International Ceramics Residency was in 2024 by Selina Chen and Matt Watterson. The space is situated in Jingdezhen, nestled between a natural creek and mountains with 300 cubic metres of garden space. The studio is a retreat from the fast pace of city living, whilst only being 7 minutes drive from all major spots of the porcelain capital. We offer recommendations and a scooter for residents to explore the city.

The two directors have lived and worked in Jingdezhen for over 6 years and offer help and guidance to any artists hoping to experience the authentic creative life in Jingdezhen. We are able to help co-ordinate traditional technique classes and project critiques if needed. The Kiln Room hosts open studio parties on a regular basis for residents and local artists to socialize and bond as a ceramic community.

# Our Directors



**Selina Chen** was born in Guangzhou and moved to Canada at the age of 11. She graduated from Central Saint Martins College with a BA degree in Jewelry design and further studied glassblowing and ceramic arts in Toronto. Selina worked as an interior and furniture designer becoming proficient in 3d modeling and industrial productions. She moved to Jingdezhen to focus on her ceramic studio Nanac and have since also opened a buyer shop in sculpture factory.



**Matt Watterson** is from Columbus, Ohio. He graduated in 2018 with a BA degree in ceramics from Alfred University. Matt moved to Jingdezhen in the same year and became influenced by the traditional techniques of Jingdezhen. He specialized in big hand built sculptures and modern teaware designs with traditional cobalt techniques. Matt has joined many outdoor installation projects and frequently show in exhibitions in China, Europe, and North America.

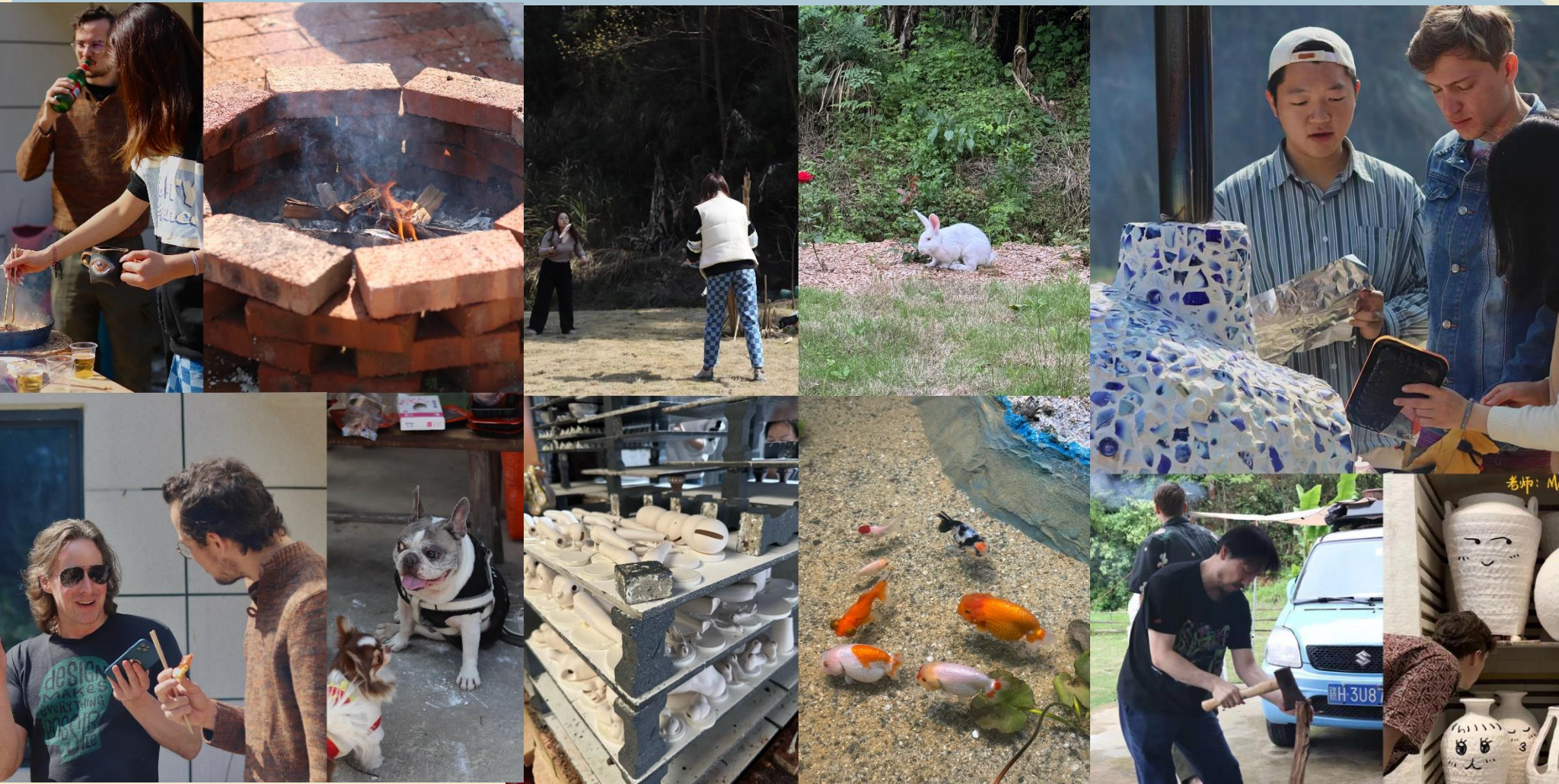
# Residency Life

Open Studio . Pizza parties . Nature . Classes . Museums . Art tours



# 让驻场生活更精彩

Open Studio . Pizza parties . Nature. Classes. Museums . Art tours



# We have it all!

- **Studio space** : 5 electric kilns, throwing wheels, slab roller, custom shelves, tables, etc.
- **Accommodation**: 2 queen beds, reading lights, wifi, wardrobes, beanbag, etc.
- **Garden Space** : pond, lawn , fruit garden, creek, wood-fired pizza oven
- **Kitchen**: electric stove, rice cooker, airfryer, microwave, kettle, etc.
- **Transportation**: electric scooter, Didi (online cab hailing)

Skutt Kiln: 72x72x55CM



Medium test kiln: 46x31x38CM



**Bisque Kiln : 60x49x67CM**



**Large Kiln : 85x85x165CM**





# Small test kiln: 45x23x28CM Custom Shelves



# Resident studio space



Slab roller



Throwing wheel

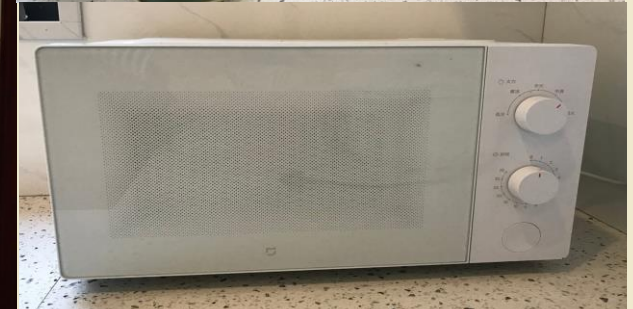


# Shared Bedroom





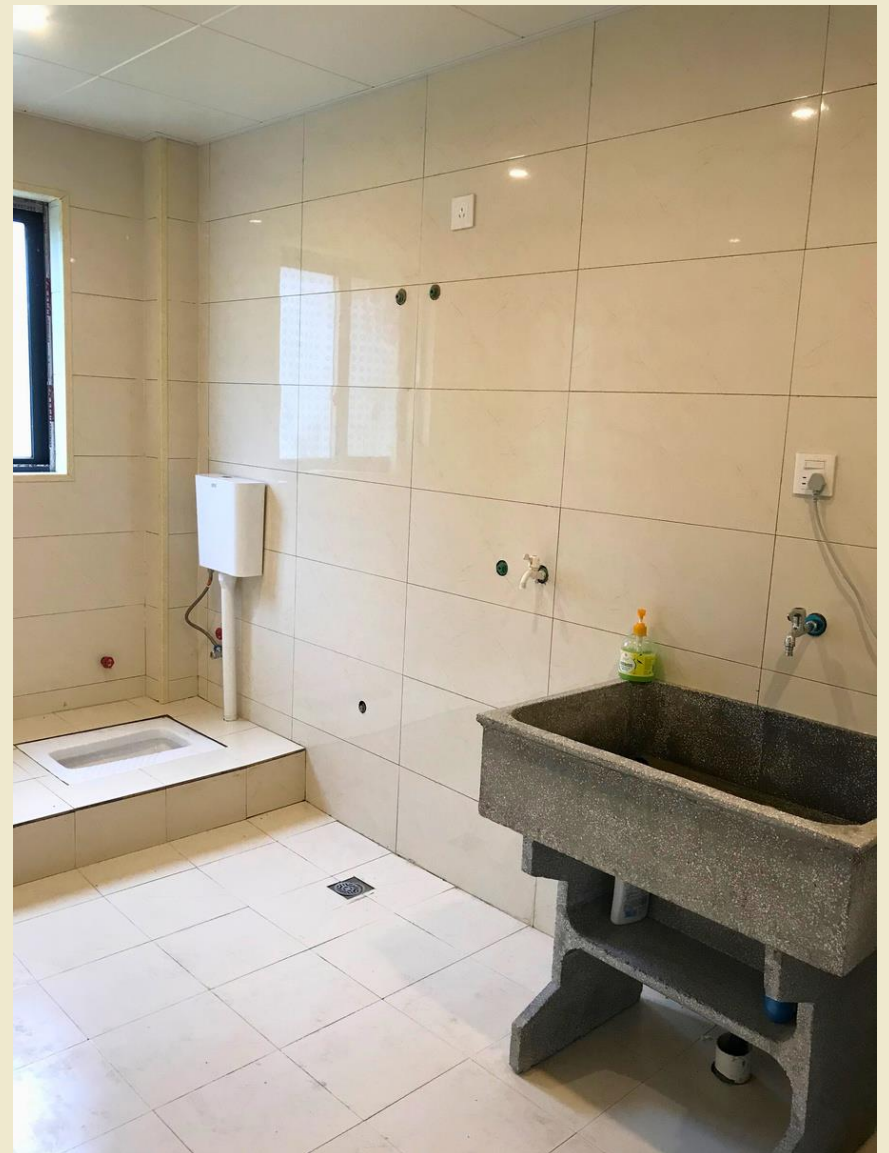
# Shared Kitchen



Resident bathroom



Resident work bathroom



# Shared scooter





Price List :

Minimum 7 days

Shared studio Space:

**120RMB/day** ////

---

Shared studio Space with shared  
bedroom: **200RMB/day**

---

Shared studio space with private  
bedroom: **280RMB/day**

For more info please contact wechat or  
Instagram @kilnroom.jdz

---

Matt Watterson X Nanac

窑房国际  
驻场空间

**THE KILN ROOM**  
international ceramics  
residency

